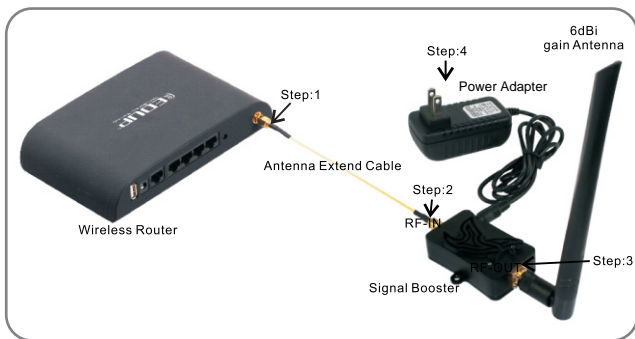


Wifi booster instruction Manual

- 1.Support Standards:IEEE 802.11b/g/n
- 2.Frequency:2400~2500MHz
- 3.Working Pattern:TDD
- 4.RF Output Power:36dBm[4W]
- 5.Input Trigger Power:Min:3dBm Max:20dBm
- 6.Transmit Gain:13 dB \pm 1
- 7.Receiver Gain:10 dB \pm 1
- 8.TX/RX Switch Time Delay: < 1us
- 9.Noise Figure: < 2.5dB(typical)
- 10.Operating Temp:-40°C~+70°C
- 11.Working Voltage:6-18VDC
- 12.Operating Humidity:up to 95% rel humidity



Step1:Remove the Antenna from the wireless Router (Access Point)

Step2:Use cable to connect the Booster and AP

Step3:Connect the Antenna to the other end of Booster

Step4:Plug in the Power Adapter