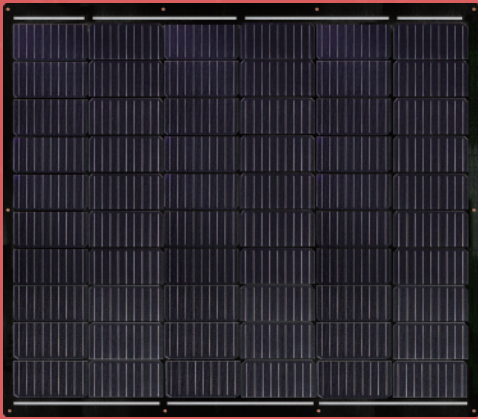


eArc

SMF200J-6X10DB-e

200 Watt

60 Half Cell Monocrystalline Module



Ultra-light: Glass free module weighs 2.6 kg, 70% lighter than conventional glass modules.



Aesthetic: Seamless integration with underlying installation surface.



Durable: eArc is the first glassless module to pass the same durability tests as conventional glass modules, including IEC 61215:2016, IEC61730:2016 and UL61730 (USA). eArc has also passed PID, salt mist and ammonia corrosion tests.

POWER OUTPUT RANGE 200 W

POWER TOLERANCE 0-5 W

LINEAR PERFORMANCE WARRANTY

CAUTION: Read installation manual before using the product.

©2023 Sunman (zhenjiang) Co., Ltd. All rights reserved. Specifications included in this datasheet are subject to change without notice.

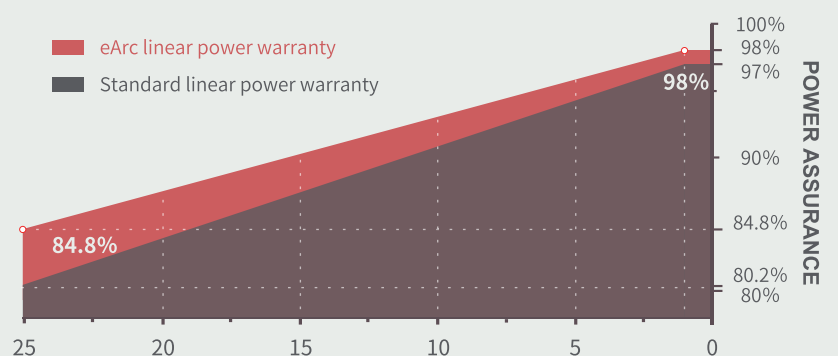
5 Year Product Warranty



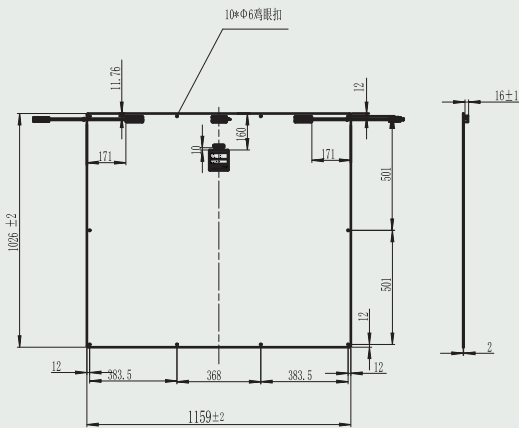
www.sunman-energy.com



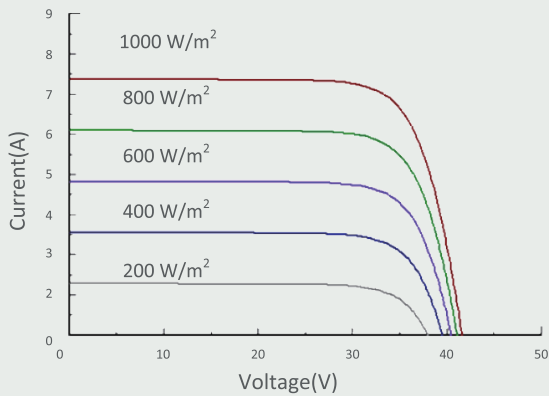
ULTRA-LIGHT & FLEXIBLE SOLAR PANEL



DIMENSIONS



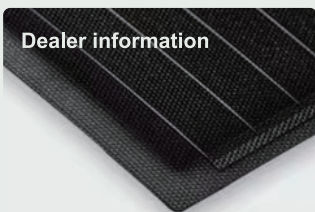
I-V CURVE (200)



TEMPERATURE CHARACTERISTICS

Nominal Module Operating Temperature(NMOT)	41±2 °C
Temperature Coefficient of P_{max}	-0.34 %/°C
Temperature Coefficient of V_{oc}	-0.26 %/°C
Temperature Coefficient of I_{sc}	0.033 %/°C

Dealer information



SMFDB IEC EN 2023B 11

ELECTRICAL CHARACTERISTICS

STC	SMF200J-6X10DB-e
Maximum Power (P_{max})	200
Maximum Power Voltage (V_{mp})	34.2
Maximum Power Current (I_{mp})	6.10
Open-circuit Voltage (V_{oc})	41.6
Short-circuit Current (I_{sc})	6.37
Module Efficiency (%)	16.9
Operating Temperature	-40 °C to 85 °C
Maximum System Voltage	1500 V DC (IEC)
Maximum Series Fuse Rating	25 A
Application Class	Class A
Power Tolerance	0/+5 W

STC: Irradiance 1000W/m², Cell Temperature 25°C, AM=1.5.

Tolerances of P_{max} , V_{oc} and I_{sc} are within ±5%

NMOT	SMF200J-6X10DB-e
Maximum Power (P_{max})	162.3
Maximum Power Voltage (V_{mp})	34.2
Maximum Power Current (I_{mp})	4.75
Open-circuit Voltage (V_{oc})	41.7
Short-circuit Current (I_{sc})	5.09

NMOT: Irradiance 800W/m², Ambient temperature 20°C, AM=1.5, Wind speed 1 m/s.

MECHANICAL CHARACTERISTICS

Solar Cell	Monocrystalline silicon(182mm half cell)
No. of Cells	60 (6×10)
Module Dimensions	1159×1026×2 mm
Weight	2.6kg
Backsheet	cell side Black
Frame	Frameless
J-box	IP 68 rated
Output Cables	Photovoltaic technology cable 4.0 mm 2, (+)450 / (-)450 mm
Connector	MC4 compatible

PACKAGING CONFIGURATION

	20' GP	40' HC
Module per pallet	66	66
Pieces per container	528	2112