

SHURFLO® SOLAR-POWERED SUBMERSIBLE PUMP

MODEL 9300 SERIES

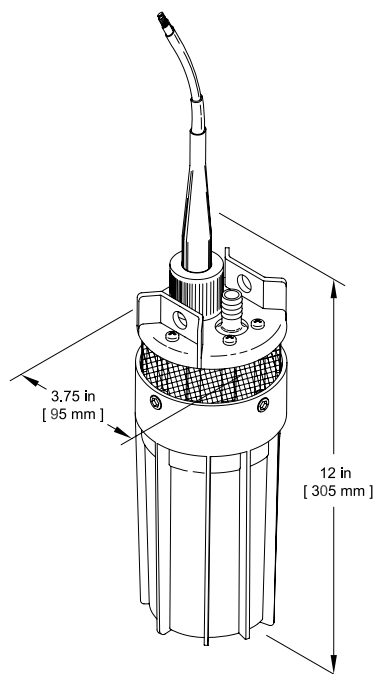
THE SOLUTION TO YOUR REMOTE PUMPING NEEDS



FEATURES & BENEFITS

This pump is rugged, durable and built to last. The 9300 delivers a steady 82 GPH [310 LPH] at its maximum depth of 230 ft. [70M] when supplied with 24 VDC. Its unique water-tight power connector stops water wicking and condensation. Great for livestock watering, irrigation, pond aeration, remote homes and cabins.

- | Corrosion-proof
- | Dry Running capability without damage
- | Internal Bypass for pump protection
- | Long-life, 24 VDC or 12 VDC Operation
- | State-of-the-art solid diaphragm
- | Low Maintenance Design/Field-Repairable
- | Unique water-tight gland connector
- | Quick Disconnect – No splicing necessary
- | Accepts a variety of jacketable cables



TECHNICAL CHARACTERISTICS

MODEL NUMBERS
PUMP DESIGN
MOTOR
VOLTAGE
AMPS
INTERNAL BYPASS
MAXIMUM LIFT
SUBMERSION
OUTLET PORT
INLET
MATERIALS
NET WEIGHT

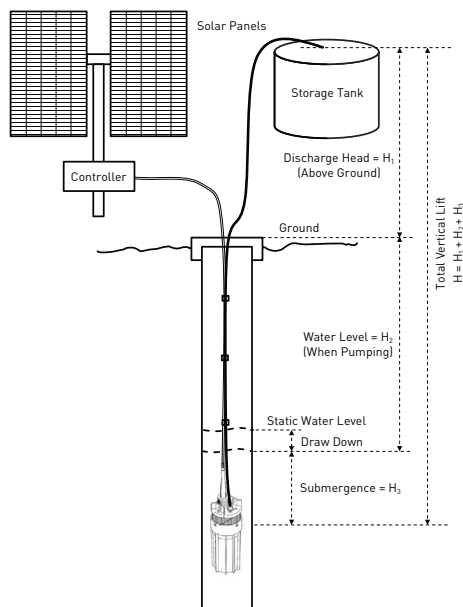
9325-043-101, 9325-083-101 (CE certified)
 Positive-Displacement 3-Chamber Diaphragm Pump
 Permanent Magnet, Thermally Protected
 24 VDC Nominal
 4.1 Amps
 105-110 PSI Max. [7.2-7.5 BARS]
 230 Feet Maximum [70 m]
 100 Feet Maximum [30 m]
 ½" [12.7mm] Barbed Fitting for ½" [12.7mm] I.D. Tubing
 50 Mesh Stainless Steel screen
 High Strength Engineered Plastics, Stainless Steel Fasteners
 6 lbs. [2.7 kg]

SHURFLO® SOLAR-POWERED SUBMERSIBLE PUMP

MODEL 9300 SERIES

THE SOLUTION TO YOUR REMOTE PUMPING NEEDS

TYPICAL INSTALLATION



H1 = Discharge head = vertical distance in feet/meters from ground level to level of water in elevated storage tank.

H2 = Water level = vertical distance in feet/meters from level of water in well when pumping up to ground level.

H3 = Submergence = vertical distance in feet/meters from level of water in well when pumping, to pump position in well (do not exceed 100 ft. / 30 m).

H = H1 + H2 + H3 = Total vertical lift
(do not exceed 230 ft. / 70 m).

Drawdown = vertical distance in feet/meters from static water level to water level when pumping.

PERFORMANCE

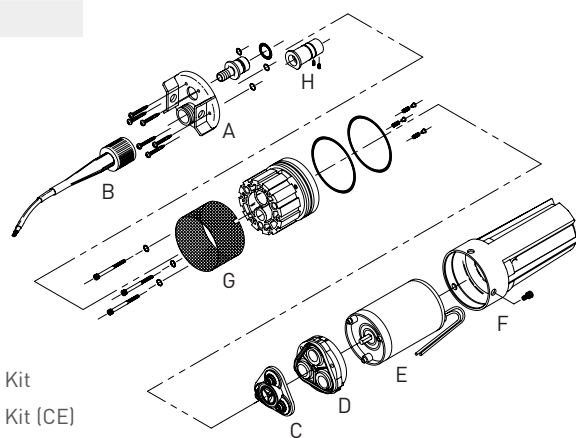
Total Vertical Lift		Flow Rate Per Hour		Solar Array Size Min. Total Power Rating	Current
Feet	Meters	Gallons	Liters	Watts	Amps
20	6.1	117	443	58	1.5
40	12.2	114	432	65	1.7
60	18.3	109	413	78	2.1
80	24.4	106	401	89	2.4
100	30.5	103	390	99	2.6
120	36.6	101	382	104	2.8
140	42.7	99	375	115	3.1
160	48.8	98	371	123	3.3
180	54.9	93	352	135	3.6
200	61	91	345	141	3.8
230	70.1	82	310	155	4.1

NOTE: Use of an LCB (Linear Current Booster) is required for optimum performance. Minimum total power rating shows minimum array watts required.

The Model 902-100 and 902-200 LCB Submersible Pump Controllers increase daily water output up to 30%. The system starts pumping earlier in the morning and stops later in the evening. They protect the pump from low or high voltage, and have terminals for a tank float switch. The advanced 902-200 has a water tight enclosure, well water level monitors, on-off switch and operates on 12 or 24 VDC.

REPLACEMENT PARTS KITS

	Model #	Description
A	94-135-00	Lift Plate
B	94-136-00	Cable Plug Kit
C	94-137-00	Valve Kit
D	94-138-00	Lower Housing Assembly Kit
E	94-139-00	Motor Kit
F	94-140-00	Canister Kit
G	94-141-00	Filter Screen Kit
H	94-142-00	O-Ring Kit
	94-004-00	Brush & Endbell Kit
	94-004-05	Brush & Endbell Kit (CE)



FILTRATION & PROCESS

3545 HARBOR GATEWAY SOUTH, SUITE 103, COSTA MESA, CA 92626, (800) 854-3218 WWW.SHURFLO.COM

All Pentair trademarks and logos are owned by Pentair, Inc. All other brand or product names are trademarks or registered marks of their respective owners. Because we are continuously improving our products and services, Pentair reserves the right to change specifications without prior notice. Pentair is an equal opportunity employer.

MS-040-114 08/13 ©Pentair, Inc. All Rights Reserved.