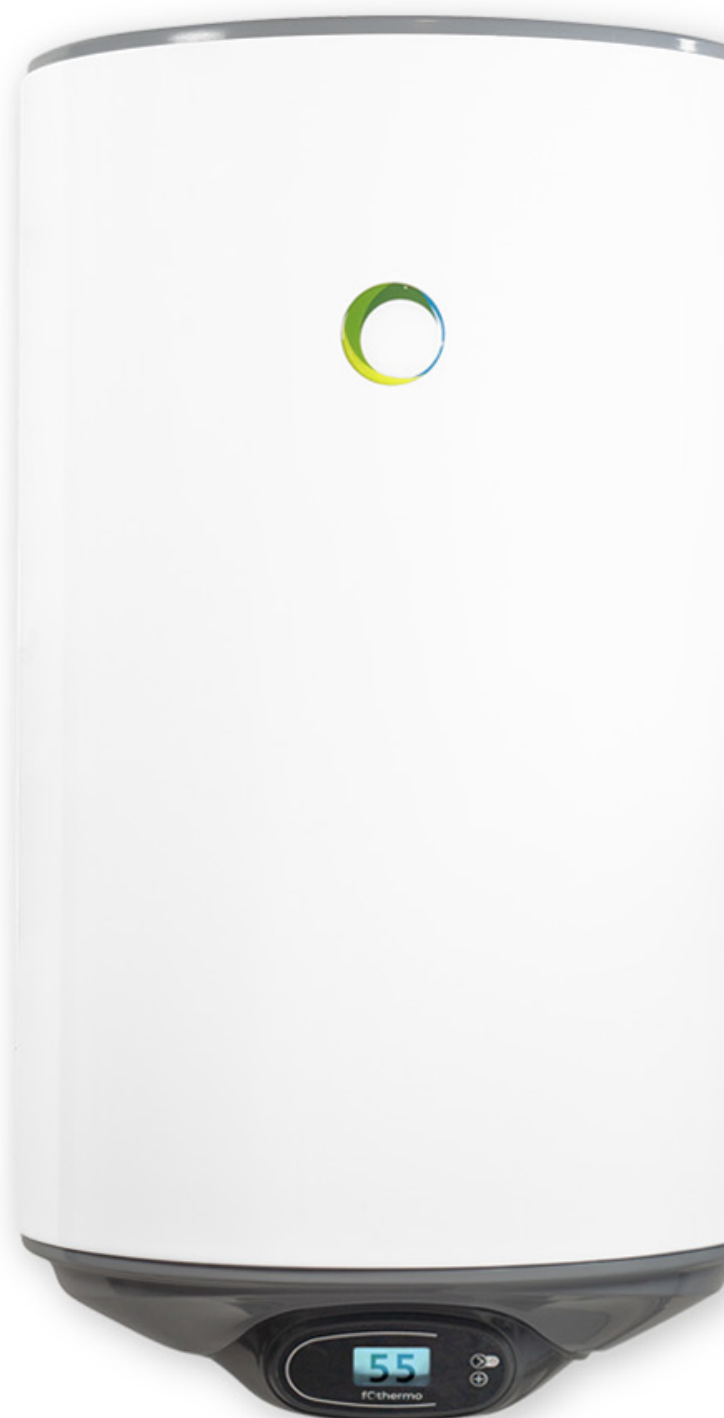


**TECHNOSUN**

# **Instruction Manual**

## **Cover installation and removal**

 [www.technosun.com](http://www.technosun.com) |  [b2b.technosun.com](http://b2b.technosun.com)



V.032323

# Table of contents

1. Notice! Before opening the cover	3
2. Remove cover and disconnect connections	3
2.1. Open cover	3
2.2. Cover removal	3
2.3. Disconnecting the temperature sensor	4
2.4. Disconnecting the heating resistor	4
2.5. Disconnecting the temperature sensor	4
2.6. Removing the anode and cathode	5
3. Installation of the cover	6
3.1. Connecting the temperature sensor	6
3.2. Connect heating resistor	6
3.3. Positioning the temperature probe and temperature sensor	6
3.4. Installation of the temperature sensor	7
3.5. Installation of the anode und cathode	7
3.6. Close the cover	7

# 1. Notice! Before opening the cover

!! Disconnect the water heater from any electrical wiring !!

!! The exchange of the circuit board may only be carried out exactly according to instructions and only by persons with a basic electrical understanding !!

## 2. Remove cover and disconnect connections

### 2.1. Open Cover

Using a Phillips screwdriver, loosen the two marked screws.



### 2.2. Cover removal

Now carefully open the cover from the side of the water connections and slowly remove it in the direction of the display. Please disregard the cable harnesses in the picture on the right. These are not true to the original. The picture is only for illustration!



## 2.3. Disconnecting the temperature sensor

Pull the white plug of the temperature sensor out of the board holder. This requires some force.



## 2.4. Disconnecting the heating resistor

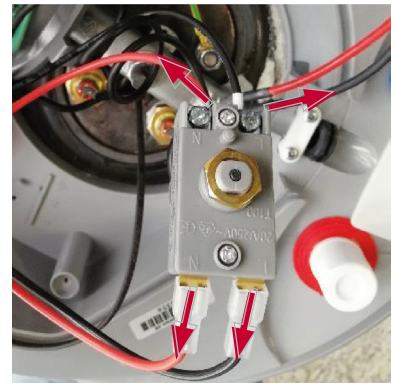
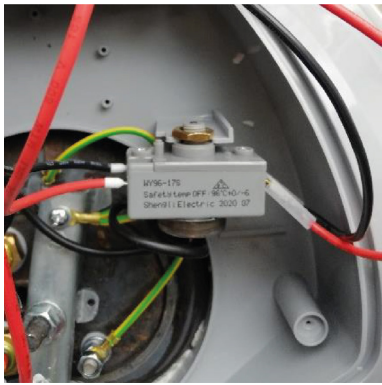
Disconnect the marked red and black cable from the contact plugs.  
**TIP:** Grasp the cable at the connector with transparent protection and rock slightly to the right & left to pull the cable off more easily.



## 2.5. Disconnecting the temperature sensor

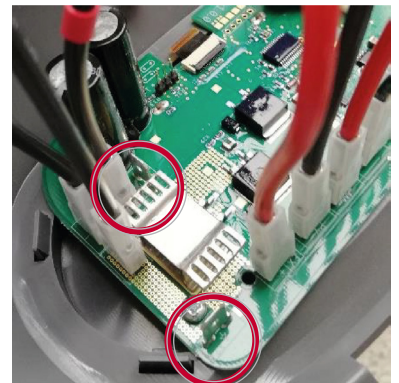
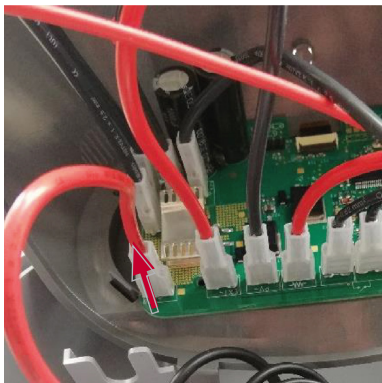
Remove the temperature sensor from the bracket by slightly unscrewing the copper-colored nut. Now you can disconnect the red and black connector and loosen the screws of the red and black cable to remove them as well.

**IMPORTANT:** Check the generation of the board by reading “PCB vx.x.x” at the bottom left. If the pcb generation read is v1.1.3 or higher, only a red wire harness is needed for the safety temperature sensor. This must be placed opposite each other as shown below. The connections of the black cable harness are left empty on the safety temperature sensor.



## 2.6. Removing the anode and cathode

The last step is to remove the cathode and anode cables. Once these are disconnected, you can remove the cover from the boiler and start to insert a new cover.

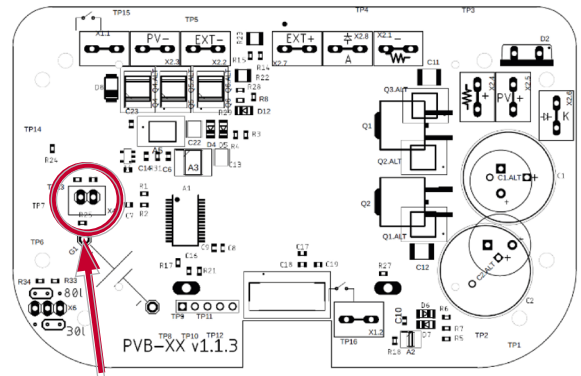


# 3. Installation of the cover

**ATTENTION:** The replacement board is different from the defective one.

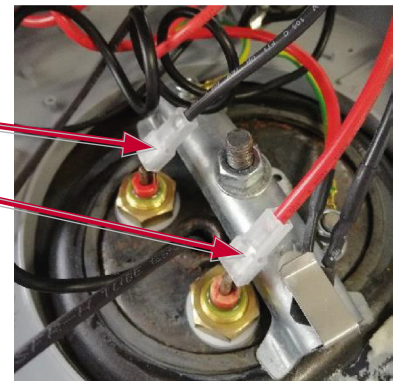
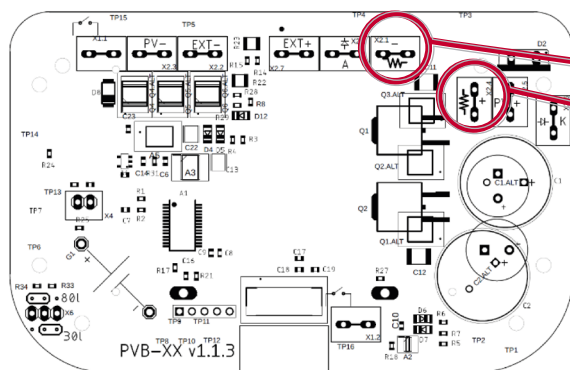
## 3.1. Connecting the temperature sensor

Take the temperature sensor plug and press it onto the prefabricated board holder. The sensor is then firmly seated when you hear a slight "click".



## 3.2. Connect heating resistor

Connect the two marked cables to the plugs provided for this purpose. In this case, the polarity is not relevant. So you can decide which plug you want to attach to which connector.



## 3.3. Positioning the temperature probe and temperature sensor

If not already done, push the temperature sensor and temperature sensor spiral as far as possible into the marked opening.

**TIP:** You should place the pin of the sensor on the spiral and then push both in at the same time.

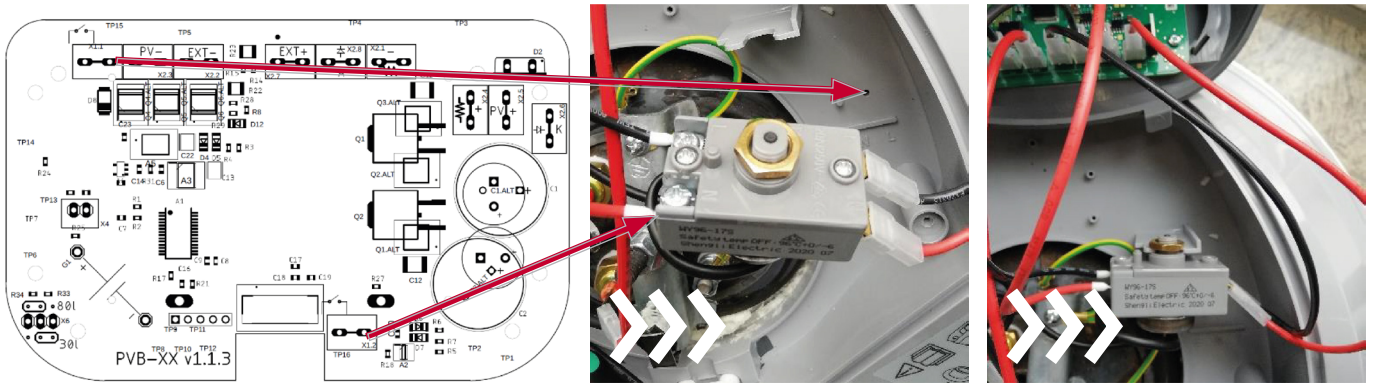




### 3.4. Installation of the temperature sensor

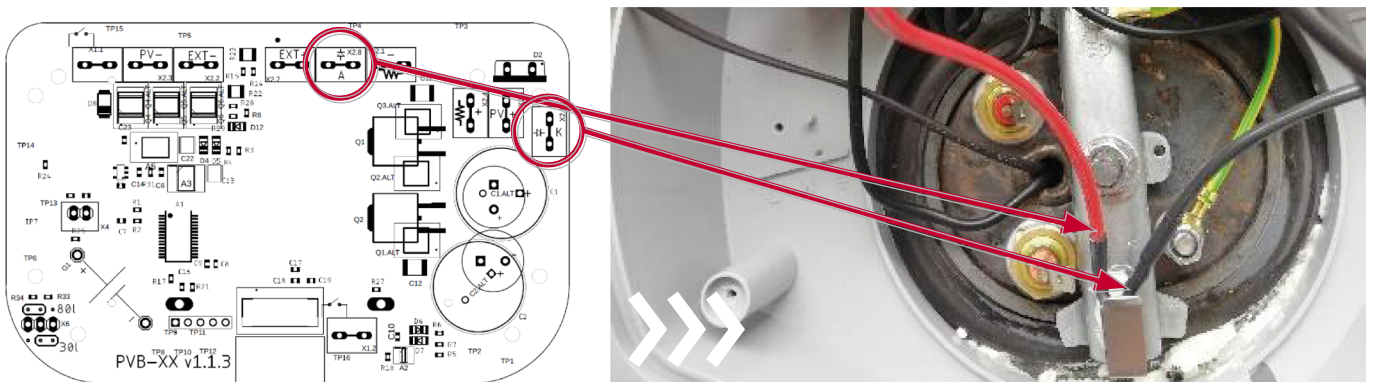
**ATTENTION:** The replacement board has only two wires to the temperature sensor.

Connect the pluggable cable to the sensor. Loosen the screws and attach the other cable so that they are opposite each other. The two other connections of the temperature sensor remain free. Ignore the black wires in the pictures. Then screw the temperature sensor back on.



### 3.5. Installation of the anode and cathode

The anode & cathode are plugged into the last two missing places on the board. Connect the anode (red cable) to the red marked terminal and the cathode (black cable) to the black marked terminal.



### 3.6. Close the cover

Be careful not to kink or disconnect any cables. Now carefully close the cover. If it lies everywhere, screw it in place at the two holes provided.

**NOTE:** (Same as picture 01).

# TECHNO SUN

Techno Sun S.L.U.

C/ Villa de Madrid 32, P.I. Fuente del Jarro  
46988 Paterna, Valencia. España

 +34 963 826 565

 [comercial@technosun.com](mailto:comercial@technosun.com)

 [www.technosun.com](http://www.technosun.com)

 [b2b.technosun.com](http://b2b.technosun.com)