

# TECHNOSUN Vertical Inclined

## AIR-TS-D2 (20-45°) SERIES



Easy  
installation



Easy  
maintenance



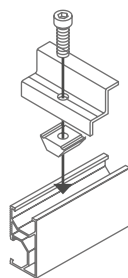
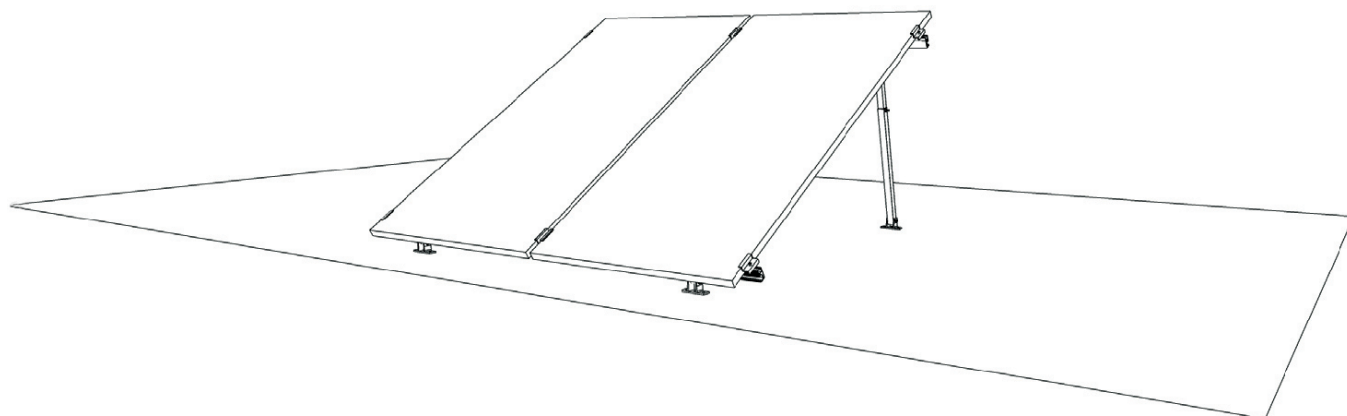
Safe and  
reliables



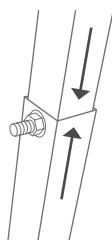
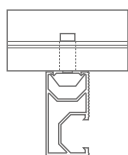
AL 6005 T5  
EN AW 6060  
ALLOY

INOX A2  
SCREWS

AVAILABLE IN  
RAW AND  
ANODISED



Fixing system  
TS-D2



Telescopic legs 20-45°  
From 695 to 1280 mm

### Now also available:

Black profiles and accessories.  
Earthing safety covers and accessories

## Technical specifications

### DESIGN

Our AIR-TS-D2 inclined structure is suitable for the vertical installation of solar panels on flat surfaces.

Thanks to its TS-D2 fastening system and its telescopic legs, a simple and effective fastening is achieved.

### CHARACTERISTICS

Aluminium profiles, pressures and accessories.  
Stainless steel screws  
Telescopic legs (20-45°).  
100% recyclable.  
Universal fixing for panels  
(available for 30/35/40mm depending on model).  
Easy assembly and configuration.  
3 years warranty.