

TECHNOSUN Vertical Coplanar

ACL-TS-D2 SERIES



Easy
installation



Easy
maintenance



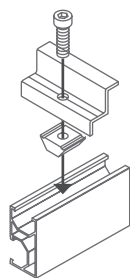
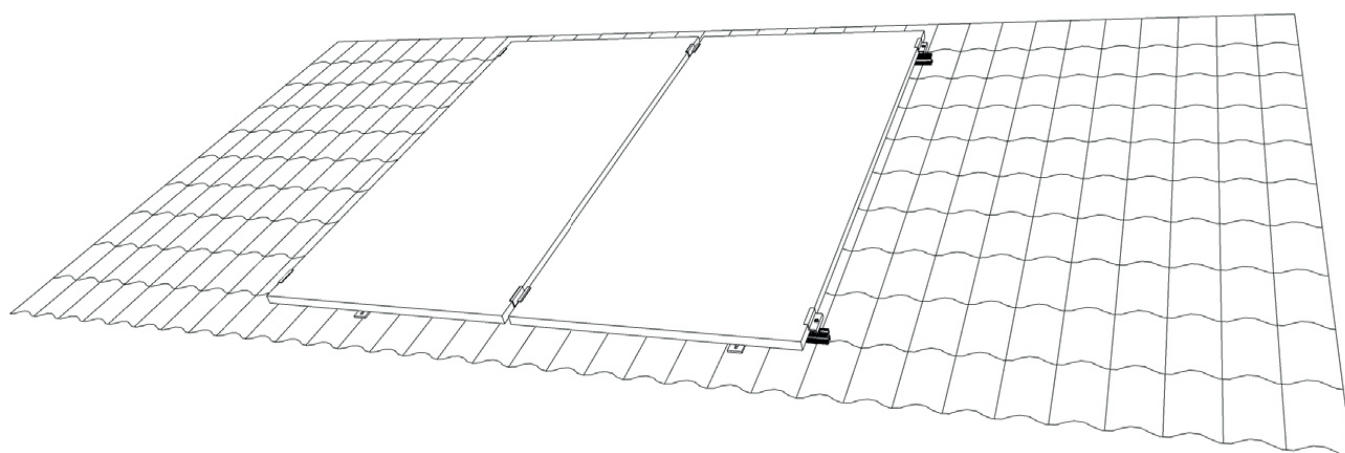
Safe and
reliables



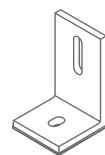
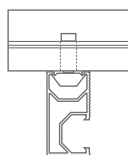
AL 6005 T5
EN AW 6060
ALLOY

INOX A2
SCREWS

AVAILABLE IN
RAW AND
ANODISED



Fixing system
TS-D2



Surface anchoring system
L-shaped with EPDM

Now also available:

Black profiles and accessories.
Earthing safety covers and accessories

Technical specifications

DESIGN

Our coplanar structure ACL-TS-D2 is suitable for vertical installation of solar panels on inclined surfaces. Thanks to the TS-D2 fastening system, simple and effective fastening is achieved.

CHARACTERISTICS

Aluminium profiles, pressures and accessories.
Stainless steel screws
EPDM surface anchoring.
100% recyclable.
Universal fixing for panels
(available for 30/35/40mm depending on model).
Easy assembly and configuration.
3 years warranty.